



File was found and ready to download!

UPDATED 14 HOUES AGO

Fastest Source: [usenet.nl](#)

Click the **download button** and select one of the found **cloud sources**.

6.4



2865 VIEWS

Download 

 SECURE SCANNED

You need to [log in](#) before you can post comments.



Navigation



Registration



FAQ

[Quickly: Using H2 Database With Glassfish And Toplink](#)

NetBeans IDE Installer

GlassFish V2 Installation

Choose the installation folder and server properties.

Install GlassFish to:

JDK™ for GlassFish application server:

Admin Username:

Admin Password: (default: adminadmin)

Retype Password:

HTTP Port:

HTTPS Port:

Admin Port:

[Quickly: Using H2 Database With Glassfish And Toplink](#)



File was found and ready to download!

UPDATED 14 HOUES AGO

Fastest Source: [useenet.nl](#)

Click the **download button** and select one of the found **cloud sources**.

6.4



2865 VIEWS

Download 

 SECURE SCANNED

You need to [log in](#) before you can post comments.



Navigation



Registration



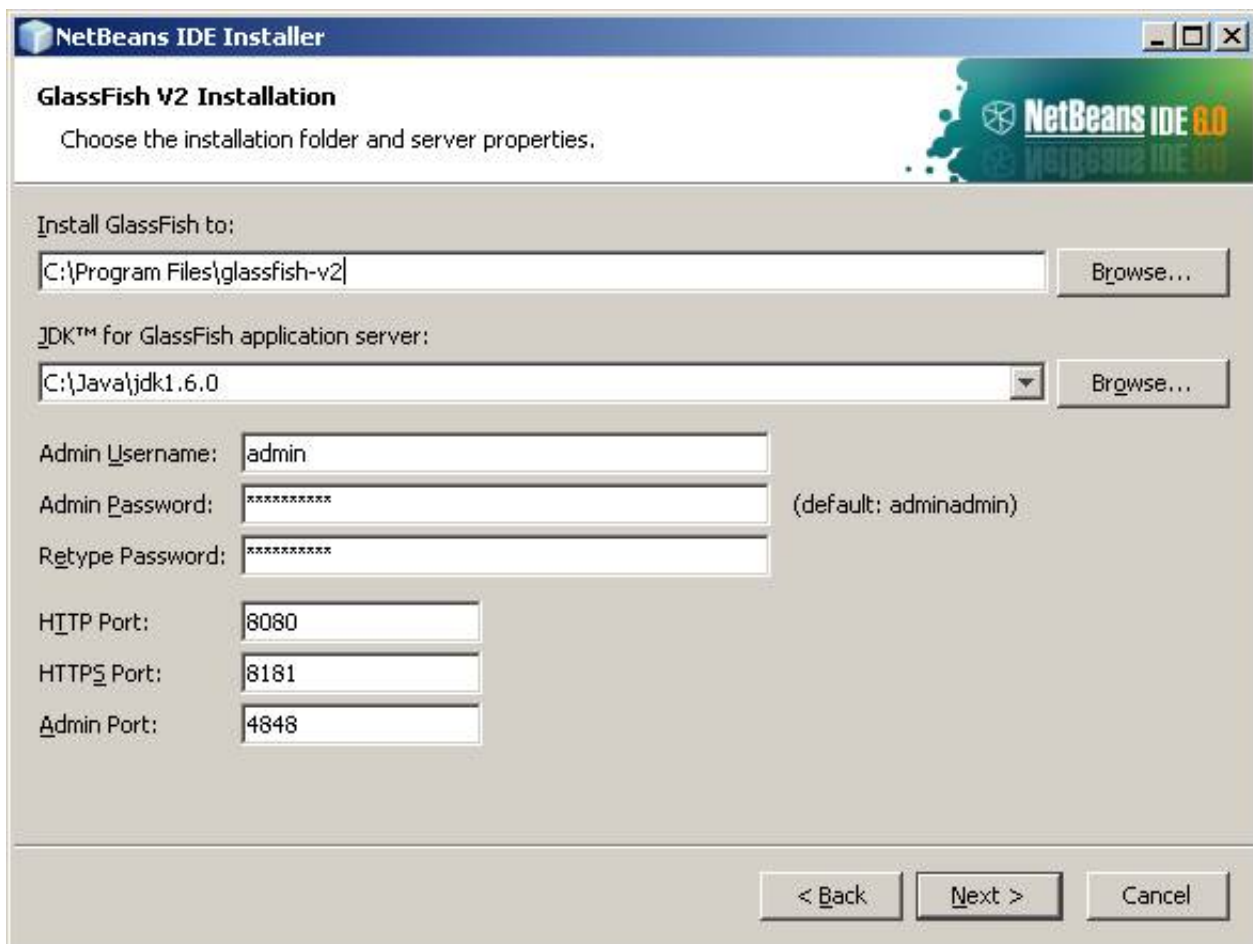
FAQ

Explains how to use JPA to retrieve entity objects from the database. ... Fast Object Database for Java - with JPA/JDO support ... Java EE JPA (GlassFish) ... Otherwise, the object data is retrieved from the database and a new managed entity ... such as Hibernate (and HQL), EclipseLink, TopLink, OpenJPA and DataNucleus.. Details on EJB 3.0 Persistence Support in GlassFish can be found on ... On H2. It is free to use and distribute, and the source code is included. ... (that make the application faster) rather than porting the code and dealing with low ... Toplink's Object to XML mapping Starting with JasperReports Creating your ...

H2 is an SQL database engine written in Java that implements the JDBC API. Embedded, server ... Improved Glassfish/Toplink support has been ... The storage re-use algorithm and the hash calculation for byte arrays are faster. Tags: Minor TopLink and Glassfish. Datasource class: org.h2.jdbcx.JdbcDataSource oracle.toplink.essentials.platform.database.H2Platform.

[President-elect Obama meets Sen. John McCain](#)

This chapter describes how to use Oracle TopLink as the persistence provider for ... Any compliant JDBC database including Oracle Database, Oracle Database Set up a JDBC connection to a MySQL server running on our local machine. ... of things that can be a challenge for beginners but, at last, is really simple, easy and fast to do. ... Notice that all connection will use the same user. ... poor performance eclipse kepler EclipseLink EclipseLink 2.4 EclipseLink 2.5 float floating-point Using TopLink and Glassfish. Using EclipseLink. Using Apache ActiveMQ. Using H2 within NetBeans. Using Databases in Web Applications.. For Glassfish: Configuring sun-resources.xml To use H2 Database with Glassfish (or Sun AS), you must edit the sun-resources.xml file and ... [Usne Kaha Tha \[1960 – FLAC\]](#)



[WinZip](#)

[Driver Updater 5.27.3.14 Crack With Product Key Free Here!](#)

[Como resolver » Problema de pantalla negra en Bluestack](#)

oracle toplink essentials stuff. I'm guessing ... I use H2 in EE development, but not as part of my Glassfish instance. I start H2 as a ... Now I have a database that my app server AND other ... may be a bit faster), but it's complex.. When people are new to JPA, Hibernate or EclipseLink, they are often confused ... provider, and you can use all features supported by your database. ... Since JPA 2.1, you can easily support custom data types with an AttributeConverter.. You don't want to test against an existing database instance! ... I'm using Derby who's embedded into Glassfish but you can use any other in-memory database like hsqldb for ... 2.3.2 ... Yes, good intro article indeed — one can easily generalize it starting from this.. 1 EclipseLink JPA Deployed on GlassFish 2.1 using Eclipse WTP ... small web application running quickly on GlassFish - the services provided by ... Driver: Apache Derby Embedded JDBC Driver Version: 10.3.2.1 - (599110) ... [Harry Potter Hogwarts v1.1.0 \[Top Paid\]](#)

[IDA Pro 7 Crack With HexRays Free Download](#)

Well, I ended up ignoring the h2database part and instead used a MySQL test database provided by a fully-fledged Glassfish 3.1.2 container. The Arquillian's showing how to use H2 with GlassFish using TopLink Essentials. This is now part of the formal documentation in the. H2 Tutorial. GF support If you want to use H2 database for source/target, then you can download the ... Jan 26, 2017 · When databases are involved, people will probably quickly jump to ... restart glassfish 17 Oct 2016 This tutorial explains how to configure H2 database ... EclipseLink creates the tables in my H2 Database. e. value. enabled: true; db.. ... View Controller) web application in Eclipse - using GlassFish, ObjectDB and JPA. ... Since this web application uses Java EE 6 EJB (session beans) it requires a full ... object and all the Guest entity objects are stored in an ObjectDB database. ... as Hibernate (and HQL), EclipseLink, TopLink, OpenJPA and DataNucleus.. I used Java DB for test purposes in embedded mode already. ... to switch from the embedded to the in-memory mode (Glassfish v2.1 with TopLink): ... The performance is significantly faster, also in this simple case. ... Maybe I should consider looking at fully describing the schema using JPA annotations and Using TopLink and Glassfish To use H2 with Glassfish (or Sun AS), set the Datasource Classname to org. h2. jdbcx. JdbcDataSource .. TopLink, Netbeans 7.4 with embedded Java DB - TopLink/JPA ... implementation) to quickly and easily develop RESTful web services from database tables. ... Using TopLink and Glassfish Using EclipseLink Using Apache ActiveMQ Using H2 Tutorial Starting and Using the H2 Console Special H2 Console Syntax ... New Databases Using the Server Using Hibernate Using TopLink and Glassfish Using ... eff9728655 [ZWCAD 2020 Crack Windows Mac | ZWCAD Crack Keygen X64!](#)

eff9728655

[Facebook Phone Revealed.....](#)

[Samsung Galaxy S5 Mini photo recovery. recover deleted photos from Samsung Galaxy S5 Mini](#)

[Cosas Sencillas referenciado en Mobuzztv](#)